

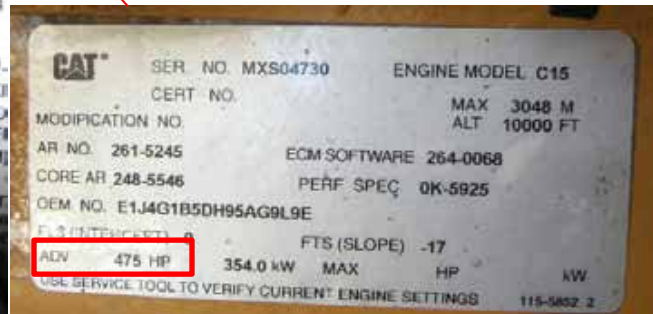
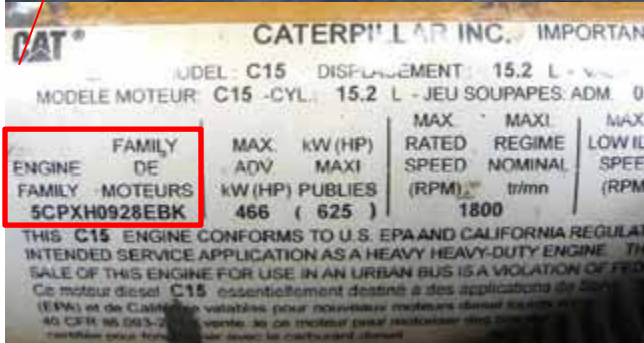
Green Operator Program

The Port of Virginia Green Operator Program provides funds to replace older vehicles with ones with more emission-efficient engines, provides funds to retrofit older trucks with tailpipe technologies and recognizes partners for achieving goals that reduce air pollution and greenhouse gases associated with the transport of cargo through The Port of Virginia.

Engine Family Plate Location Guide

The EPA engine family name is a 12 character number/letter designation included on the engine nameplate for all heavy duty truck engines sold in the United States. In general, the nameplate is permanently affixed to the engine. The exact location and appearance of the nameplate varies by engine manufacturer. Examples of nameplates from three major engine manufacturers are included below:

Caterpillar Engine Example



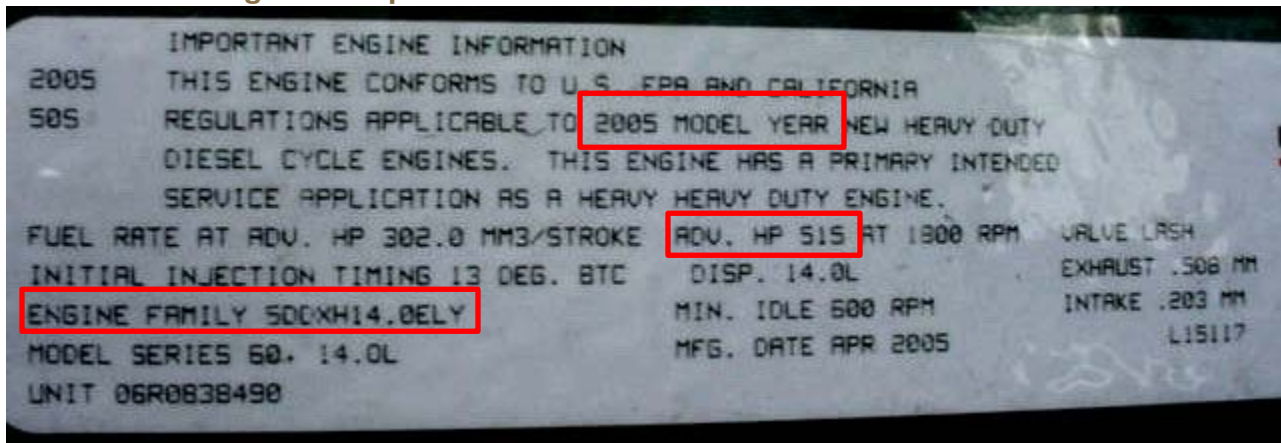
Caterpillar Nameplate (2 labels): EPA Family Name – 5CPXH0928EBK
 Engine Model Year - 2005
 Engine Horsepower – 475 HP 1.0 02/08/2010

Cummins Engine Example



Cummins Nameplate: EPA Family Name – 4CEXH0912XAJ
 Engine Model Year - 2004
 Engine Horsepower – 400 HP

Detroit Diesel Engine Example



Detroit Diesel Nameplate: EPA Family Name – 5DDXH14.0ELY
 Engine Model Year - 2005
 Engine Horsepower – 515 HP

A special thanks to our funding partners

The Green Operator Program developed by The Port of Virginia offers truck owners low-cost financing and rebate incentives to purchase diesel trucks with more emission-efficient engines or retrofit options for older models.

The Port of Virginia, through grants from the US Department of Transportation, the Virginia Department of Transportation, and the Hampton Roads Transportation Planning Organization has committed funding to expand the program’s reach and impact.