

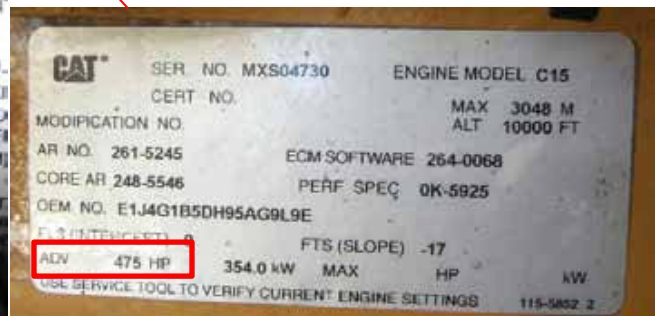
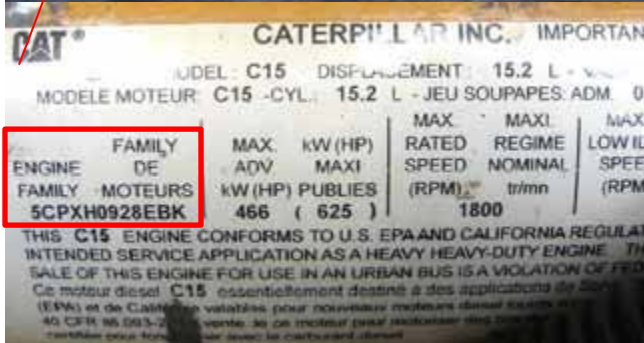
Green Operator Program

The Port of Virginia Green Operator Program provides funds to replace older vehicles with ones with more emission-efficient engines and recognizes partners for achieving goals that reduce air pollution and greenhouse gases associated with the transport of cargo through The Port of Virginia.

Engine Family Plate Location Guide

The EPA engine family name is a 12 character number/letter designation included on the engine nameplate for all heavy duty truck engines sold in the United States. In general, the nameplate is permanently affixed to the engine. The exact location and appearance of the nameplate varies by engine manufacturer. Examples of nameplates from three major manufacturers are included below:

Caterpillar Engine Example



Caterpillar Nameplate (2 labels): EPA Family Name – 5CPXH0928EBK
 Engine Model Year - 2005
 Engine Horsepower – 475 HPV1.0 02/08/2010

Cummins Engine Example

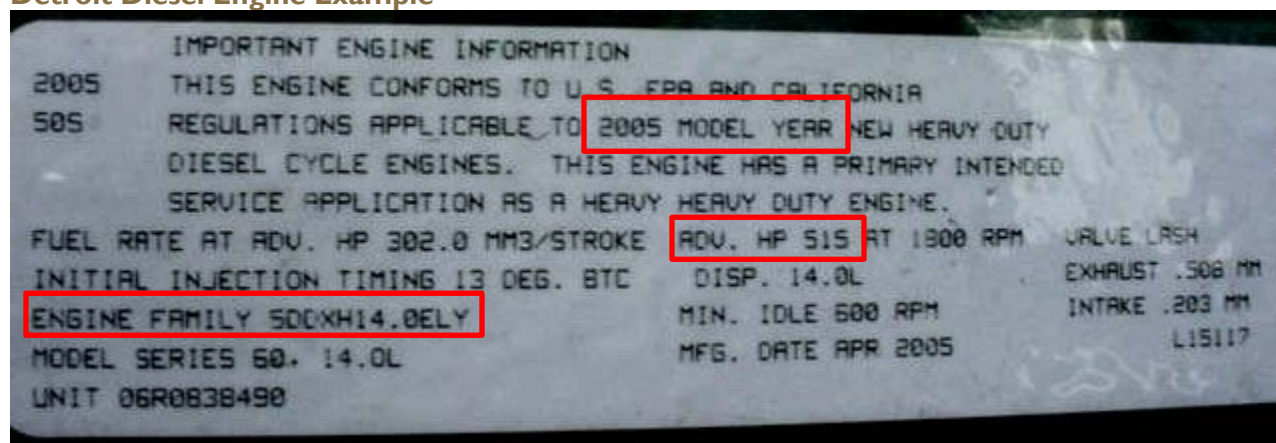


Cummins Nameplate: EPA Family Name – 4CEXH0912XAJ

Engine Model Year - 2004

Engine Horsepower – 400 HP

Detroit Diesel Engine Example



Detroit Diesel Nameplate: EPA Family Name – 5DDXH14.0ELY

Engine Model Year - 2005

Engine Horsepower – 515 HP

A special thanks to our funding partners

The Green Operator Program developed by The Port of Virginia offers truck owners rebate incentives to purchase diesel trucks with more emission-efficient engines.

The Port of Virginia, through grants from the US Department of Transportation, the Virginia Department of Transportation, and the Hampton Roads Transportation Planning Organization has committed funding to expand the program’s reach and impact.